

riva silver

SILVER-ALLOY REINFORCED GLASS IONOMER RESTORATIVE MATERIAL

SILBERVERSTÄRKTER GLAS-IONOMER-FÜLLUNGSZEMENT

MATERIAL DE RESTAURAÇÃO DE LIGA DE PRATA COM IONÔMERO DE VIDRO

IONOMERO DE VIDRIO RESTAURADOR REFORZADO CON ALEACION DE PLATA

CIMENT VERRE IONOMERE D'OBTURATION RENFORCE A L'ARGENT

MATERIALE VETRO-IONOMERICO PER RESTAURO RINFORZATO CON ARGENTO

SILVER-ALLOY VERSTERKT GLASIONOMEER RESTAURATIEMATERIAAL

SØLVFORSTÆRKET GLASIONOMER FYLDNINGSMATERIALE

SØLVFORSTERKET GLASSIONOMER FYLLINGSMATERIALE

HOPEALLA VAHVISTETTU LASI-IONOMEERI

ΥΑΛΟΪΟΝΟΜΕΡΕΣ ΥΛΙΚΟ ΑΠΟΚΑΤΑΣΤΑΣΗΣ ΕΝΙΣΧΥΜΕΝΟ ΜΕ ΚΡΑΜΑ ΑΡΓΥΡΟΥ

GLASJONOMER DO WYPEŁNIEŃ WZMOCNIONY OPIŁKAMI SREBRA

EZÜST ÖTVÖZETTEL MEGERÖSITETT ÜVEGIONOMER TÖMÖANYAG

HÖBEDASULAMI OSAKESTEGA TUGEVDATUD KLAASIONOMEERNE
RESTAURATSIOONIMATERJAL

SREBRNA ZLITINA / STEKLASTO IONOMERNI RESTAVRACIJSKI CEMENT

AR SUDRABA AMALGAMU STIPRINĀTS STIKLA JONOMĒRU
RESTAURĀCIJAS MATERIĀLS

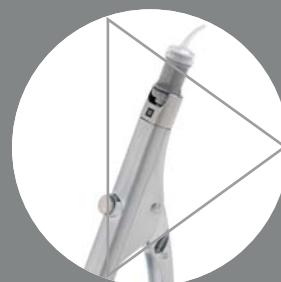
STIKLOJONOMERAS SU SIDABRU

IÓNOMERNÝ SKLOVINU POSILŇUJÍCÍ MATERIÁL SE SLITINOU STŘÍBRA

IÓNOMERNÝ SKLOVINU POSILŇUJÚCI MATERIÁL SO ZLIATINOU STRIEBRA

銀合金強化修復用グラスアイオノマーセメント

銀合金增強型玻璃離子修復材料



SDI

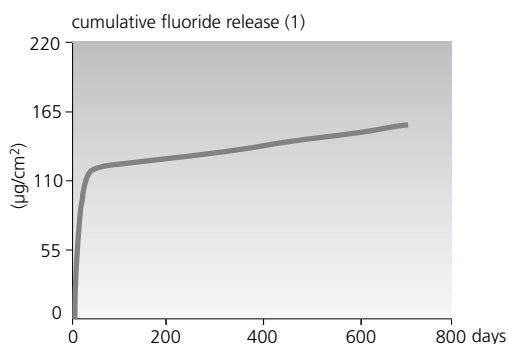
mercury free fluoride releasing silver restorative



riva silver

Proprietary ionglass technology

Riva Silver utilizes SDI's proprietary *ionglass*[™] filler developed by our glass technologists. *ionglass*[™] is a radiopaque, high ion releasing, reactive glass used in SDI's range of dental cements. Riva Silver releases substantially higher fluoride to assist with remineralization of the natural dentition.



High fluoride release

Riva Silver's free movement of fluoride provides benefits to surrounding and adjacent tooth surfaces. Fluoride is held within the glass matrix without being bound by the structure. If the level outside the matrix is lower, then fluoride ions are released.

Conversely, if the fluoride level is higher (eg. from topical fluoride) then fluoride will recharge the glass ionomer matrix. Riva Silver has the ability to be recharged with fluoride from external sources, providing long term protection against recurrent carries. Riva Silver is great for treating high caries-risk patients as part of an overall treatment plan for maximum care.

Easy handling

Riva Silver's condensable nature allows the operator to quickly and easily place the restoration. Riva Silver can be packed using an amalgam condenser.

Perfect for non-compliant patients

Riva Silver is the ideal restorative in situations where patient compliance and moisture control are difficult. Riva Silver is extremely easy and quick to use.

Light color

The light grey color of Riva Silver requires minimal masking when used under esthetic restorations.

Riva Silver

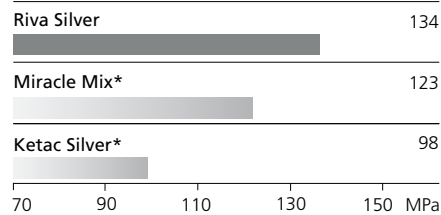


Great for core buildups

Riva Silver is an excellent material for core buildups. Its high early compressive and bond strength properties ensure favorable core buildup conditions.

High early strength

compressive strength at 1 hour (2)



Riva Silver's high compressive strength minimizes the risk of fracture in the critical early stages after the restoration has been placed.

No additional mixing step

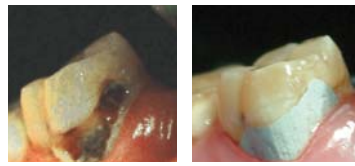
The benefits of using Riva Silver capsules are obvious. However, if using the powder / liquid system, no separate adding and mixing of alloy into the powder is required. The alloy component of Riva Silver is pre-mixed into the powder bottle.



Packaging

Riva Silver is available in capsule and powder / liquid systems. The unique SDI patented capsule system completely activates to achieve a smooth and reproducible mix every time.

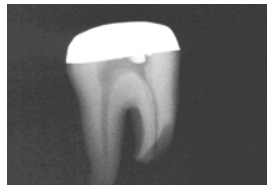
Before After



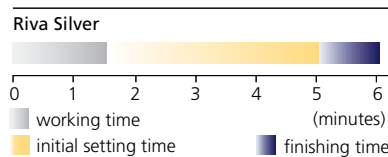
Photos courtesy of Dr. Philip Casan, Victoria, Australia

High radiopacity

The addition of metal particles into the cement substantially increases radiopacity. Riva Silver is easily differentiated on radiographs from that of tooth structure allowing easy diagnosis of early lesions.



elapsed time from start of mixing



Indications

- Small class I and II restorations
- Deciduous teeth restorations
- Geriatric restorations
- Intermediate restoratives and base material for class I and II cavities using the sandwich technique
- Class V restorations in non-esthetic situations
- Core buildups
- Temporary fillings
- Restorations where radiopacity is desirable
- Restorative in the field using the ART technique
- Temporary endodontic fillings

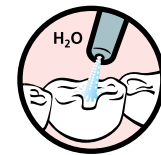
instructions:

Isolate tooth, prepare cavity

- 1 Apply Riva Conditioner for 10 seconds or Super Etch 37% Phosphoric Acid for 5 seconds



- 2 Wash thoroughly



- 3 Remove excess water. Keep moist



- 4 Mix the capsule in an amalgamator OR mix the powder/liquid combination on a mixing pad



- 5 Apply Riva Silver to tooth surface



- 6 Form a contour and cover with a matrix if required



- 7 Apply Riva Coat and light cure



- 8 Final finishing under water spray using standard techniques can begin approximately 6 minutes after start of mixing



- 9 Apply Riva Coat and light cure

riva silver



Riva Silver Capsules
50 x Riva Silver Capsules
Reorder 8670008

Riva Silver Powder/Liquid Kits
10g (8.9mL) Riva Silver Liquid Bottle
32g Riva Silver Powder jar
accessories
Reorder 8670508

Riva Silver Powder refills
32g Riva Silver Powder jar
Reorder 8670108

Riva Silver Liquid refills
10g (8.9mL) Riva Silver Liquid Bottle
Reorder 8670900



Riva Coat
5mL bottle refill
Reorder 8610001

Riva Conditioner
10mL bottle refill
Reorder 8620001



Riva Applicator 2
Reorder 5545013



Riva Applicator
Reorder 5545009

* Miracle Mix and Ketac Silver are not the registered trademarks of SDI Limited.

** Published and SDI Test Data.

(1) McCabe JF, Al-Naimi OT. Fluoride release of three Riva GI Products Compared with that of a competitor product. University of Newcastle (UK); July 2007 .

(2) Source: Al-Naimi, O.T., McCabe, J.F., Comparing the Compressive Strength of Riva Silver GIC with that of Other Competitor Products, January 2005, University of Newcastle (UK).



Made in Australia by SDI Limited
Bayswater, Victoria 3153
Australia 1 800 337 003
Austria 00800 022 55734
Brazil 0800 770 1735
France 00800 022 55 734
Germany 0800 100 5759
Ireland 01 886 9577
Italy 800 780625
New Zealand 0800 734 034
Spain 00800 022 55 734
United Kingdom 00800 022 55 734
USA & Canada 1 800 228 5166
www.sdi.com.au



M867002 C